

A close-up photograph of a woman with dark, curly hair and large gold hoop earrings, smiling warmly. She is holding a young child with light brown, curly hair, who is also smiling. The woman is wearing a blue and grey patterned top, and the child is wearing a light green t-shirt. The background is a soft-focus outdoor scene with greenery and a white railing.

Children's Home Society of California

2025 Annual Report

Our Mission

The mission of Children's Home Society of California (CHS) is to reach out to children and families at risk with a range of services that ensure every child the opportunity to develop within a safe, healthy, and secure environment.

02

Message from the
Chair of the Board of Directors
and the President and Chief
Executive Officer

04

Introducing Our New
Chief Growth Officer

05

Introducing Our New
Board Members

07

Volunteer Leadership

08

Staff Leadership

10

CHS in Brief

12

Child Care Payment
Program (CCPP)

14

Family Child Care Home
Education Network
(FCCHEN)

16

Resource and Referral
(R&R) Program

18

Emergency Child Care
Bridge Program for
Foster Children (Bridge)

20

Post Adoption Program (PAP)

22

Family Education Program (FEP)

24

Provider Relations
Department (PRD)

26

Health and Safety Training
and Reimbursement Program

28

CalWORKs Colocation Program

30

Bequests

31

Memorial Gifts

32

Our Donors

36

Heritage Club

37

Honor Gifts

38

Give a Gift for Good

40

Staff Recognition

Children's Home Society of California (CHS) has a long history of supporting California families.

As a trusted leader in providing family support services, CHS ensures families have access to affordable, dependable child care, and that child care providers have the resources and tools they need to create and maintain quality child care environments for the children in their care.

Our programs help families find and pay for child care, while offering free educational materials, workshops, and resources on early learning and child development. We also support child care providers with training, guidance, and resources to strengthen the quality of care available to families across California. Originally founded in 1891 as an adoption agency, CHS expanded its mission in 1974 to include child care and development services — a commitment that continues to serve families and communities.



*"Thank you CHS.
You make a difference!"*

-Parent

Message from the Chair of the Board of Directors and the President and Chief Executive Officer

We are delighted to share the Children's Home Society of California (CHS) Fiscal Year 2025 Annual Report. Fiscal Year 2025 was a year of celebration, growth, and ongoing dedication to supporting families across the state. CHS continued marking 50 years of child care and development services with events honoring our dedicated Board of Directors, staff, and the child care providers who make quality care possible. These celebrations included multiple events hosted by the Resource and Referral Program for child care providers, offering refreshments, educational materials, and activities for children, giving providers a well-deserved break while they fostered connections.

This past year also represented a period of growth, innovation, and increased engagement. CHS expanded its executive team and Board of Directors, welcoming Todd McCormack as Chief Growth Officer and new Board Members Mike Aycock, Kathleen McDonough, Bonnie McFarland, and Cambreisha Montgomery. Their vision, expertise, and energy are helping CHS expand its impact across the state, strengthen partnerships, increase opportunities, and advance programs that support families.





Douglas G. Schultz



Beverly Tidwell

Reflecting on this growth, CHS significantly expanded its community outreach and engagement efforts in 2025. Staff across all service areas participated in a wide range of local events to connect directly with families, child care providers, and community partners. Teams from CHS offices in Orange, Yuba City, and Woodland took part in county fairs, reaching thousands of attendees and sharing information about CHS programs and services, and providing informative Family Education Program materials. In addition, staff were active at events such as the Long Beach Early Childhood Education Symposium in the greater Long Beach area of Los Angeles County, Child Development Associates' (CDA) Annual Resource Fair in San Diego County, and the Agency 101 Resource Fair and several Back-to-School Nights in Ventura County. These are just some of the collective efforts CHS took part in to raise awareness of CHS programs, while strengthening relationships with new and returning clients, community members, and local partners throughout California.

For 134 years, CHS has been committed to providing families and child care providers with quality programs, services, and resources to meet their needs. In Fiscal Year 2025, CHS had the opportunity to showcase the work of the Family Child Care Home Education Network (FCCHEN) to the California Department of Social Services (CDSS), receiving praise for our program systems, quality assurance processes, and provider support. During the successful 2025 Contract Monitoring Review (CMR), CHS was able to highlight our strong infrastructure, commitment to quality, and dedication to families and child care providers.

We are deeply grateful to our Board Members, staff, leadership team, and community partners, whose collaboration make CHS's successes possible. Our achievements are a joint effort and we extend special thanks to our donors, whose generosity supports the programs and services being offered to California families and child care providers. As we look ahead, CHS remains committed to meeting the evolving needs of the communities we serve, ensuring that families have the resources, guidance, and support they need to reach their goals today and in the future.

With gratitude,

"Our achievements are a joint effort and we extend special thanks to our donors, whose generosity supports the programs and services being offered to California families and child care providers."

Douglas G. Schultz
Chair, Board of Directors
November 2025

Beverly Tidwell
President and Chief Executive Officer
November 2025

Introducing Our New Chief Growth Officer

In Fiscal Year 2025, CHS welcomed a new member to our executive team — Chief Growth Officer, Todd McCormack. With his vision and expertise, CHS is poised to expand our impact, strengthen partnerships, and create new opportunities to ensure families have the resources and support they need to thrive well into the future.

While new to the Executive Team, Todd brings deep familiarity with the organization, having served on the CHS Board of Directors for more than 16 years. With more than 30 years of leadership experience in marketing, communications, partnerships, and client engagement, he now leads the implementation of CHS's strategic initiatives to drive growth and expand impact.

Before his involvement with CHS began, Todd dedicated his time and expertise to several nonprofit organizations, reflecting his long-standing commitment to strengthening families and improving the lives of children.



Introducing Our New Board Members

We are honored to welcome several new members to the CHS Board of Directors. Each brings a wealth of professional expertise spanning human resources management, marketing and communications, leadership and civic engagement, community relations, and social work with diverse populations.

United by a passion for making a difference, they are committed to providing leadership that strengthens our programs and valuable resources to families and child care providers.

Mike Aycock joined the Board of Directors in March 2025. From Northern California, Mike brings a wealth of knowledge and experience in human resources and working with local government, including social service agencies, with a focus on equity and inclusion.

Kathleen McDonough, owner of a family olive oil business, joined the Board of Directors in May 2025. Kathleen brings extensive experience with community and constituent relations, civic engagement, marketing, and fundraising. Kathleen was born and raised in San Francisco, where she currently resides.

Bonnie McFarland, an active community leader in Northern California, joined the Board of Directors in September 2024. Bonnie brings experience in leadership development, networking, and marketing/branding. Bonnie is passionate about her work for children in foster care, and adopted two daughters through the foster care system as a single mom. "I have been committed to working with foster children for most of my life. We had a foster child for about a year when I was in grade school and it definitely changed the trajectory of my life. As an adult, I volunteered weekly with several organizations and helped with annual events and fundraising."

Cambreisha Montgomery joined the Board of Directors in November 2024. Cambreisha is a Licensed Clinical Social Worker residing in Southern California. Cambreisha brings experience in serving culturally diverse populations in the area of mental health and crisis response.





Volunteer Leadership

The CHS Board of Directors includes compassionate volunteers devoted to supporting California families. We appreciate their steadfast leadership and their dedication to helping children thrive today and in the years ahead.

Board of Directors

Arizvel Chaudhari

Attorney/Legal Services

Bonnie McFarland

Community Leader

Cambreisha Montgomery

Licensed Clinical Social Worker

Candace A. Sue

Public Affairs Consultant

Deborah Liu

Pediatric Emergency Medicine

Diane K. Rogers

Community Leader

Dianne M. Easton

Community Leader

Douglas G. Schultz

Retired Partner

Kathleen McDonough

Community Leader

Mike Aycock

Human Resources Director

Nicole M. Lange

Associate Vice President,
Alumni Relations & University
Engagement

Patricia E. McDonough

Community Leader

Stefanie P. Medious

Community Leader

Board of Trustees

Joyce Frey



“Children’s Home Society of California has been such a blessing for our family. Their support and resources have helped us feel more confident as parents and provided our children with access to quality child care where they can thrive.”

–Parent

Staff Leadership

CHS's Leadership Team truly cares about the families we serve. We are grateful for their enthusiastic service and commitment to providing families with the tools and resources they need, wherever they are in their journey.

Executive Staff

Beverly Tidwell
President and
Chief Executive Officer

Terry Polcaro
Chief Financial Officer

Todd McCormack
Chief Growth Officer

Alison Weber
Chief Financial Officer

Senior Management Staff

Cynthia Alcott
Director of
Administrative Operations

Diana Baltazar
Human Resources Administrator

Angela Carroll
Program Administrator I

Van G. Chau
Director of
Information Technology

Rachel Dailey
Program Administrator I

Linda Dao
Quality Assurance Administrator

Sal Diaz
Program Administrator III

Yvonne Diaz
Director of Case Management

Deborah Garcia
Director of Financial Services

Hope Gonzales
Program Administrator I

Ana Gonzalez
Quality Assurance Administrator

Larry Henderson
Program Administrator III

Sandra Herrera-Gonzalez
Director of Quality Assurance

Kelli M. Hinz
Development Administrator

Talia Jacobson
Director of Quality Assurance

Diane Jasso
Director of Program Operations

Bebe Lam
Financial Services Administrator

Joelle L. Landazabal
Community Outreach
Coordinator

David Mendoza
Marketing and Communications
Administrator

Karla Moreno
Program Administrator I

Jennifer Ostergaard
Director of Human Resources

Tanya Ramos
Program Administrator I

Bridget Rattler
Financial Services Administrator

Gladys Romero
Senior Program
Accounting Manager

Ana Stephens
Program Administrator I

Gehan Tadros
Program Administrator III

May Thiveganon
Senior Network Administrator

Julie Zuer
Director of Marketing
and Communications

Management Staff

Linda Loza Adams
Program Manager

Claudia Angel
Program Manager

Jarley Blanca
Program Manager

Cynthia L. Beltz
Program Manager

Bianca Castellanos
Program Manager

Tracy J. Cluss
Senior Accountant

Cindy Flores
Quality Assurance Manager

Karina Flores
Program Manager

Shannon Granger
Program Manager

Joylyn Hans
Program Manager

Tiffany Hooper
Program Manager

Mayra Jimenez
Program Manager

Belina Landingin
Senior Accountant

Lauren Lazaro
Quality Assurance Manager

Jovan Mendez

Facilities Coordinator

Araceli Mendoza

Program Manager

Liliana Montes

Program Accounting Manager

Eva Muñoz

Program Manager

Annie Nguyen

Program Manager

Kelly Nguyen

Program Manager

Lynn Nguyen

Program Manager

Josephine Nuñez Medina

Program Accounting Manager

Beth Odom

Quality Assurance Manager

Desiree Ramirez

Program Manager

Jessica Ramos

Program Accounting Manager

Selena Rivera

Program Manager

Alejandra Rodriguez

Program Manager

Gabriela Sandoval

Program Manager

Elvira Silva

Program Manager

Amenda Srey

Program Accounting Manager

Sherri Stoudt

Office Manager

Amy Truong

Program Manager

Priscilla Vasquez

Program Manager

Joseph G. Webber

Payroll Manager



CHS in Brief

Approaching the turn of the century in 1891, two pioneers in the emerging field of child welfare, Dr. Jessie R. and Mrs. Elizabeth Townsend, felt compelled to establish Children's Home Society of California (CHS), with the goal of supporting children and families.

They believed that homeless children belonged in families, not institutions. From our initial location serving the children of Los Angeles, CHS expanded operations in 1892 to the San Francisco Bay Area. This, in turn, led to even more CHS offices and programs throughout California.

Although initially founded as an adoption agency, CHS's services have adapted to the changing needs of society over the past 134 years. Today, we offer early learning and education programs for families and child care providers across the state, post adoption information and services to those who are eligible, and vital materials and resources to families, child care providers, and community organizations nationwide through our Family Education Program.



Organization

The CHS Board of Directors, our governing body, is comprised of dedicated volunteers. The President and Chief Executive Officer of CHS leads the agency and conserves our most significant asset, the CHS Endowment. The Executive Staff oversees program and agency operations, manages the budget, and leads fundraising and program development efforts. Each day, CHS staff carry out this mission by delivering high-quality programs and services that support families and child care providers across California. Our Corporate Headquarters is located in Los Angeles, California, with additional offices in Long Beach, Orange, Oxnard, San Diego, Woodland, and Yuba City, which serves Sutter and Yuba Counties.

Financial Support

CHS's programs are recognized for providing quality services to families, as well as offering support to the child care field. While some of our programs are supported by government contracts, CHS depends on generous, private donations to bolster revenues, maintain program quality and effectiveness, and fund services that are not supported by government monies. Other funds are raised through individual donations via Gift Clubs and the Annual Campaign, Remembrance Gifts, United Way donor-designated contributions, bequests, and other planned gifts. Corporate and foundation grants are additional sources of support.

Year at a Glance

For the 12 months that ended June 30, 2025

Family Education Program

Brochures and Materials Distributed	157,832
Agencies Receiving Family Education Materials.....	389
	\$23,900

Post Adoption Program

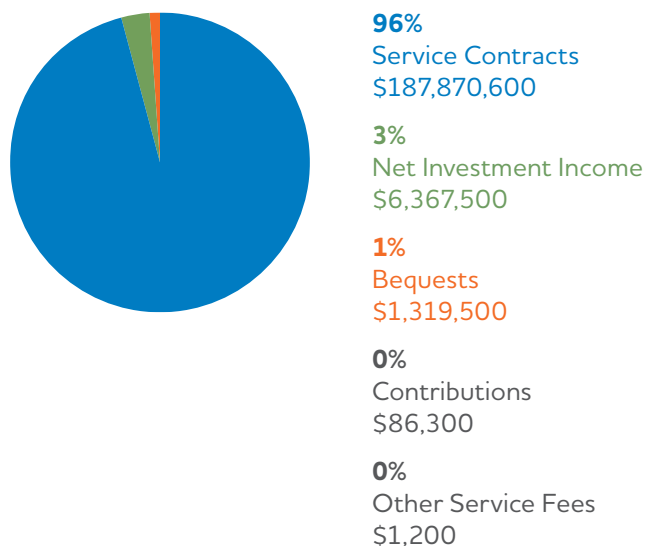
Post Adoption Inquiries Received and Services Provided	382
	\$342,600

Early Learning and Education Programs

Requests for Child Care.....	14,644
Technical Assistance Provided	27,623
Workshops and Trainings Provided.....	309
Parents and Child Care Providers Attending Training	1,291
Resource Library Visitors	759
Parent and Child Care Provider Newsletters Distributed.....	427,337
Monthly Child Care Provider Resource Update Emails Distributed	57,043
Families Served.....	9,260
Children Served.....	15,948
Child Care Provider Hotline Services.....	19,919
Days of Care Provided.....	3,510,860
	\$175,745,700



Sources of Income

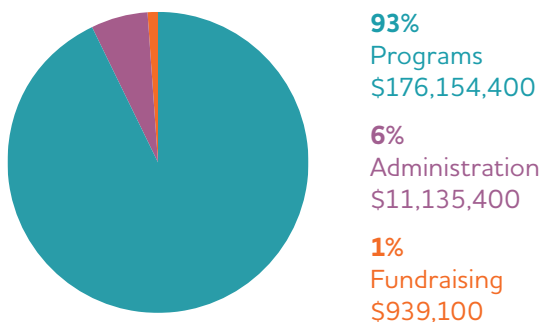


Public Support Revenue **\$189,277,600**

Other Revenue..... **\$6,367,500**

Total Income **\$195,645,100**

Expenses



Programs..... **\$176,154,400**

Agency Operations..... **\$12,074,500**

Total Expenses **\$188,228,900**

Early Learning and Education Programs include the Child Care Payment Program, the Resource and Referral Program, the Family Child Care Home Education Network Program, and the Emergency Child Care Bridge Program for Foster Children.

For the 35th consecutive year, administration and fundraising costs have been 15% or less. In 2025, 93% of CHS expenditures went to programs. Financial statements audited by Baker Tilly LLP.

Child Care Payment Program (CCPP)

The Child Care Payment Program (CCPP) pays for all or part of child care expenses while parents work, seek work, attend school, seek permanent housing, experience homelessness, are incapacitated, have children who are deemed at risk by a legally qualified professional, and/or are receiving child protective services.

Through this program, participating families select caregivers from a variety of licensed and license-exempt child care providers throughout the community.

The Child Care Payment Program is offered in the greater Long Beach area of Los Angeles County, and the counties of Orange, Sutter, Ventura, Yolo, and Yuba.

8,500
families
served


17,717
children
served

Distributed
2,353
resources to
parents
in the program



"Thank you for all you have done for my family. I truly appreciate your support."

—Parent

A close-up photograph of a woman and a young child. The woman, on the right, is smiling warmly, her face partially visible. She has dark hair and is wearing a dark green sweater. The child, on the left, is also smiling and looking towards the camera. The child has dark hair and is wearing a yellow long-sleeved shirt under a light-colored, textured sweater. The background is softly blurred, suggesting an indoor setting with natural light.

“As a single mother of four young children, ages three to ten, I am both their sole provider and their constant source of love and care. Balancing full-time work and full-time motherhood is not easy, and I could not manage this life without the support that CHS has given my family.

The assistance I receive from CHS lifts a tremendous weight off my shoulders, easing financial stress and giving me the mental and emotional strength to be the best mom I can be.

No parent chooses to be in my situation, but with CHS by my side, I know I am not alone, and for that, I am deeply grateful.”

–Parent

Family Child Care Home Education Network (FCCHEN)

The Family Child Care Home Education Network (FCCHEN) is a partnership between the parent, family child care provider, and CHS staff.

The FCCHEN program offers subsidized child care to eligible parents and supports the quality of child care providers. Family child care home providers enrolled in the FCCHEN program receive ongoing professional development training, guidance, and technical support from CHS staff to ensure high-quality child development services.

The Family Child Care Home Education Network (FCCHEN) is offered in the greater Long Beach area of Los Angeles County, and the counties of Orange, San Diego, Sutter, Ventura, and Yuba.



166
child care
providers
served

835
children
served



Supporting School-Aged Children's Self-Esteem

FCCHEN staff hosted child care provider workshops focused on nurturing school-aged children's self-esteem. Providers learned strategies, activities, and community resources designed to create environments that reinforce positive self-esteem, guiding children toward confidence and success.

Professional Development at NAEYC Conference

FCCHEN staff attended the National Association for the Education of Young Children (NAEYC) Annual Conference in Anaheim, California, gaining access to the latest research, best practices, and engagement strategies. The insights and tools acquired are being applied directly to support child care providers, children, and families in their daily lives.

Showcasing Excellence in Child Care

During the FY25 Contract Monitoring Review, FCCHEN highlighted seven child care providers in the greater Long Beach area of Los Angeles County for in-person visits from the California Department of Social Services (CDSS). CDSS staff observed daily routines and praised providers for their individualized attention and nurturing, enriching environments that promote children's growth and development.

Resource and Referral (R&R) Program

The Resource and Referral (R&R) Program offers comprehensive child development services to families and child care providers. Through this program, CHS connects parents with referrals to licensed child care providers and educates families on selecting quality child care options that best meet their needs. Additionally, CHS provides a wide range of educational resources for both parents and child care providers. This includes informative newsletters, engaging workshops, a resource lending library, and distribution of educational materials. The R&R Program also offers personalized technical assistance, up-to-date information on child care licensing regulations, and access to community resources and support networks. By fostering strong connections and providing essential tools, the R&R Program aims to enhance the quality and accessibility of child care services in the communities we serve.

The Resource and Referral (R&R) Program is offered in the greater Long Beach area of Los Angeles County, and the counties of Orange, Sutter, Yolo, and Yuba.

Helped
14,644
families find
child care

Serviced
27,623
inquiries

Provided
309
educational
workshops



At a community event hosted by the Sutter Youth Organization, a parent approached CHS staff to share how CHS's programs transformed her family's life. She explained the support made it possible for her to afford child care, allowing her to continue working and maintain stability she once feared was out of reach. With heartfelt gratitude, she thanked CHS for providing resources that not only helped her family thrive, but continue to uplift countless others in the community.

Celebrating 50 Years of Service

The R&R Program marked CHS's 50th anniversary with in-person celebrations where the community was invited to meet staff and visit CHS Resource Lending Libraries. Child care providers and the children in their care enjoyed interactive activities, such as arts and crafts and story time, received educational materials and fun giveaways, and connected directly with CHS staff.

Expanding Community Outreach

R&R staff attended **149 community events**, more than double the previous year, reaching hundreds of families at county fairs, schools, libraries, and resource centers. These efforts deepened community partnerships and highlighted CHS's multi-generational impact, with families sharing how our services have supported them across decades.

Supporting Universal Prekindergarten (UPK) Access

With the continuation of Universal Prekindergarten (UPK) Mixed Delivery Grants, CHS continued its leadership in advancing equitable access to UPK through workshops, focus groups, and community education sessions. Through a contract with the Yuba County Office of Education, the Yuba City R&R Program presented three parent focus groups, with a total of 19 participants. These educational sessions provided safe spaces for families to share their experiences and challenges. These insights were then shared with the Child Care Planning Council of Yuba and Sutter Counties, which coordinates, supports, and advocates for accessible, high-quality early care and education in the region, to help shape more inclusive early education solutions.

Emergency Child Care Bridge Program for Foster Children (Bridge)

The Emergency Child Care Bridge Program for Foster Children (Bridge) is a partnership between CHS and local county child welfare offices.

Through this collaboration, CHS serves as the bridge between eligible resource families and a stable child care setting. The program offers support to foster parents, resource families, and child care providers through child care vouchers, navigation, and trauma-informed care training and coaching services. The Bridge Program achieves its mission to improve and stabilize the placement of foster children by providing immediate access to child care services for eligible families.

The Emergency Child Care Bridge Program for Foster Children (Bridge) is offered in the greater Long Beach area of Los Angeles County, and the counties of Orange, Sutter, Yolo, and Yuba.

Expanding Trauma-Informed Care (TIC) Support

TIC staff began offering in-person coaching sessions at child care facilities, providing tailored strategies through reflective practice and observation.

Staff delivered **232 coaching sessions** supporting child care providers in creating nurturing, trauma-informed environments.

Strengthening Community Connections

Bridge staff in Long Beach engaged with resource parents and social workers during the Summer Appreciation Event, raising awareness of program eligibility and helping connect families with special needs to critical resources.

Delivering Accessible TIC Training Across California

CHS offices in Orange, Woodland, and Yuba City collaborated to provide Trauma-Informed Care workshops via Zoom, expanding access for child care providers statewide.

In March 2025, a Bridge program specialist began coaching Ms. Susie, a dedicated child care provider with more than 20 years of experience. At first, Ms. Susie was hesitant to share her needs, but through thoughtful conversation and a self-care assessment, she opened up about personal stressors and her desire to update her educational materials, something she had not been able to do, due to financial constraints.

The program specialist connected Ms. Susie with the Resource and Referral Hotline to access the CHS Resource Lending Library, and arranged an in-person coaching session at the Long Beach office. During that session, the program specialist provided her with updated resources, including social-emotional learning materials, sensory toys, journals, puzzles, and storybooks, all aimed at supporting the children in her care.

Ms. Susie expressed she was thankful for the program's support, sharing how these tools will help her continue creating a nurturing, enriching environment for the children in her care.



41
workshops
held

107
child care
providers
earned Trauma-
Informed Care
training credit

"The Bridge workshops have been so helpful. I've learned a lot about trauma and its impact on children, and I truly appreciate the ongoing support from the team."

–Child Care Provider

Post Adoption Program (PAP)

Since our founding in Los Angeles in 1891, CHS played a pioneering role in California adoption services for more than a century. During that time, the number of children placed for adoption continually increased and nearly 45,000 children found permanent homes.

Post adoption services have always been an integral part of CHS's programs and services. Following the closure of our adoption program in the late 1990s, CHS formalized and refined its post adoption services, creating the Post Adoption Program (PAP) centralized at the agency's Corporate Headquarters in Los Angeles. Although our agency no longer places children in adoptive homes, we honor our history by providing professional, post-legal adoption services to those involved in a CHS adoption, including adoptees, birth parents, and others entitled to services. All services are provided as required by California law and mandated by the California Department of Social Services.





Family Education Program (FEP)

CHS is committed to being a central community resource in California and the nation through our Family Education Program. We provide multilingual educational brochures and materials such as our Childhood Mental Health brochure, Development Stages Wheel, and School Readiness Kit, as well as podcasts and other helpful resources for parents, caregivers, and agencies.

152,901
brochures
and materials
distributed

4,954
brochures
and materials
downloaded

352
agencies
receiving
family education
materials



“The resources are so helpful — especially the ones on mental health and special needs. I really appreciate the information and topics you share.”

–Child Care Provider



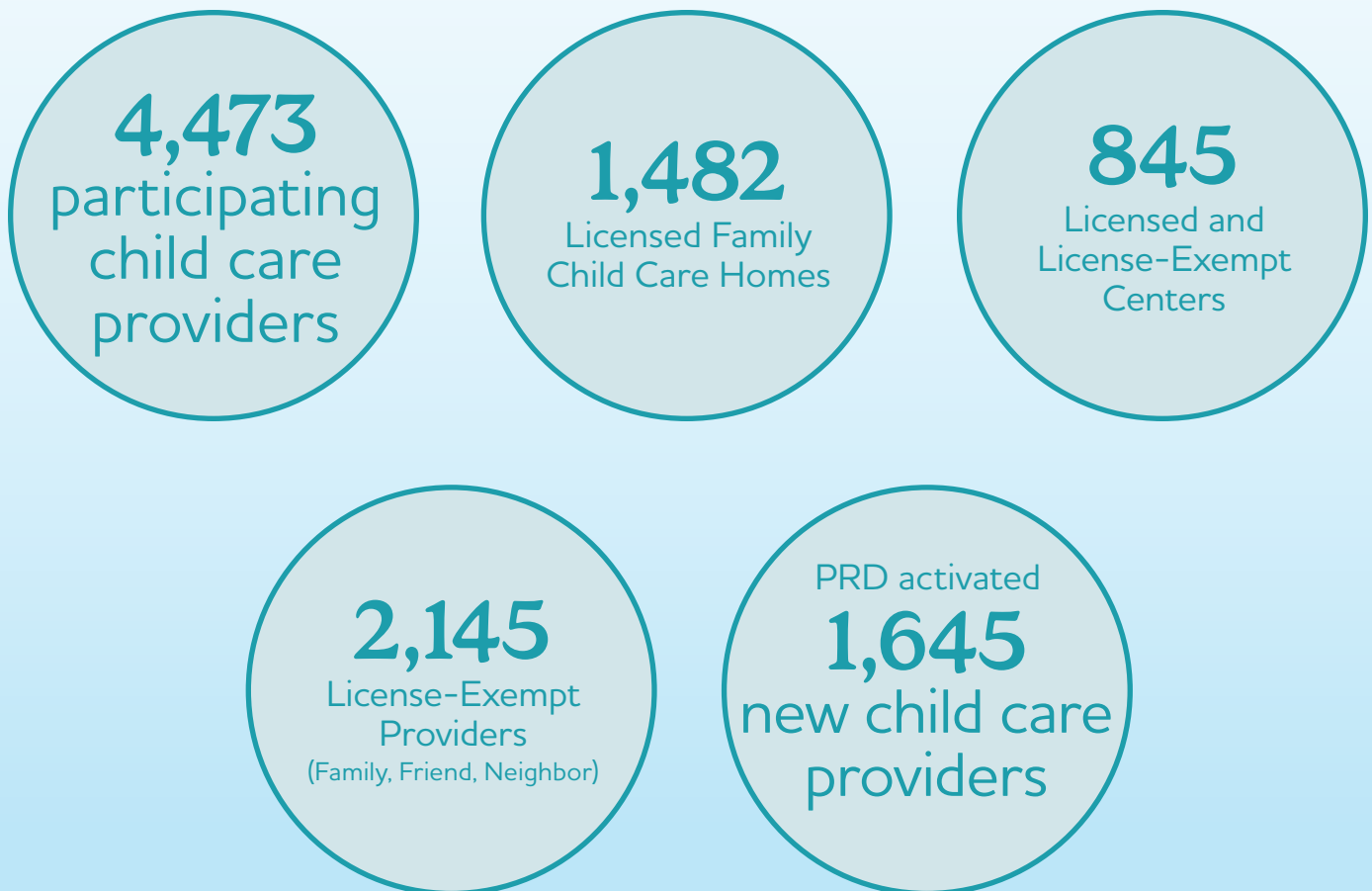
“I’ve been using your family education brochures for nearly 15 years, and they continue to be such a wonderful resource. The materials are high quality, easy to share with families, and full of valuable information that helps both the families I serve and my staff.”

–Child Care Provider

Provider Relations Department (PRD)

The Provider Relations Department (PRD) provides support to child care providers who serve children enrolled in CHS's subsidized child care programs. The PRD case management staff are responsible for the intake and ongoing case management and support for child care providers.

The Provider Relations Department (PRD) is offered in the greater Long Beach area of Los Angeles County, and the counties of Orange, San Diego, Sutter, Ventura, Yolo, and Yuba.



One of our long-time Licensed Home Child Care Providers from the Long Beach office service area has achieved a major milestone — opening her own Licensed Child Care Center in Orange County. She began her journey with CHS in 2016, often sharing her dream of one day running a center. Over the years, she remained dedicated to providing quality care for children and stayed closely connected with CHS. She expressed deep gratitude for the support she received, saying that working with CHS gave her the motivation and confidence to move forward with her goal. In June 2025, she turned that dream into reality, opening the doors to her new center and expanding her impact on the community's children and families.

“Because of CHS’s help and support, I’ve gained the tools to improve and grow my child care business. With these resources and encouragement, having a positive outlook on life comes naturally and allows me to better support others as well.”

–Child Care Provider



Health and Safety Training and Reimbursement Program

The Health and Safety Training Reimbursement Program reimburses child care providers for the cost of required health and safety training certifications (CPR, pediatric first aid, and preventive health practices or certificate renewal). Up to \$150 may be reimbursed per person for trainings completed in the fiscal year.

The Health and Safety Training Reimbursement Program is offered in the greater Long Beach area of Los Angeles County, and the counties of Orange, Sutter, Yolo, and Yuba.

Strengthening Safe and Healthy Child Care Environments

The Health and Safety Program provided child care providers with essential educational resources and supplies — including first aid kits, thermometers, smoke and carbon monoxide detectors, gloves, and sanitizing products — helping ensure safe, compliant, and well-equipped child care settings for children and families.

Increased Financial Support for Providers

Reimbursements through the R&R Program saw significant growth. In Yuba County, program funds were fully utilized, with a **300%** increase in reimbursed providers compared to the previous year. Sutter County also experienced a **25%** increase in reimbursements, reflecting greater access to critical financial support.

Distributed
911
reimbursements

“As a small child care provider, I am so grateful for these safety resources. Having first aid kits and sanitizing supplies on hand gives me peace of mind knowing I can keep the children in my care healthy and safe every day.”

—Child Care Provider

Laura, a newly licensed child care provider of a Large Family Child Care Home with two assistants, shared that the Health and Safety Reimbursement came at a crucial time. The financial support helped ease the burden of start-up costs, allowing her to focus on creating a safe, high-quality environment for the children in her care.



“I recently took my aides to get CPR certified, and we were even able to take an extra class on lead prevention, which they really appreciated. I did not worry about spending a little extra for them to learn more. When I came to CHS for my library appointment, I noticed CPR reimbursement applications and received clear guidance on what to submit to get reimbursed. I have never felt so grateful for this support, and now I know that whenever I get a new aide, I can direct them to CHS for assistance.”

–Child Care Provider

CalWORKs Colocation Program

The CalWORKs Colocation Program provides Child Care Resource and Referral services to Orange County Social Services Agency (SSA) clients, specifically at the Laguna Hills, Santa Ana, and Anaheim SSA offices.

Staff assist SSA clients in locating child care to enable them to achieve and maintain self-sufficiency. SSA clients include, but are not limited to, applicants for California Work Opportunity and Responsibility to Kids (CalWORKs), Welfare-to-Work (WTW) participants, and participants discontinued from CalWORKs. In addition to enhanced child care referrals, staff provide consumer education, child care orientations/workshops, assistance with the TrustLine registration process, and the CalWORKs Stage 1 to 2 and Stage 3 referral process. Due to county funding limitations, this program ended on June 30, 2025.



A client referred to the CalWORKs Colocation Program urgently needed child care as his current provider was going on vacation and he risked missing work without immediate support. Recognizing the urgency, staff quickly provided a personalized list of available providers, confirming openings, CalWORKs payment acceptance, and transportation options.

Staff also educated him on parental choice, to equip him to choose the type of provider that best met his family's needs, and shared CHS Family Education Program resources on choosing quality child care. Three days later, the client successfully secured care for his child, allowing him to continue working without disruption. This story highlights how timely, personalized support from CHS can have an immediate and lasting impact on a family's stability.



"I want to thank you for all your prompt support for the in-person unplanned, interviews with our clients, and for your hard work on gathering all your available resources and following up with the assistance you promised; our clients, the agency, and myself value your hard work."

–Social Services Case Worker

Bequests

Thanks to the generosity of our supporters, CHS has long been a trusted resource for families and child care providers.

Your gift helps ensure that families have access to affordable, dependable child care, along with the resources and support they need to thrive. By designating CHS in your trust or will, you are investing in opportunities that set children and families up for a successful future.

Susan D. Bigley Trust
John M. Gilbert Fund
Lee B. Gilpin Trust
Rose Marie Gnos Trust
Ralph and Nancy Gutmacher
Attelia N. Hassinger Trust
Virginia M. Jameson Trust
Susan F. Laffer Charitable Trust
Elizabeth B.H. LeMenager Living Trust
Harold Arthur Lietzau Trust
Lucille S. Maben Estate
Ida Nadine Magare Trust

Jocelyn Gibbons Marks & Mary
Scott Marks Charitable Trust
Roy B. Richardson Estate
Siegel Family Trust
John E. Sloan & Joan C. Chargin Trust
G.N. Spencer Charitable Trust
Stella Laffer Spencer Fund
Fred Stebler & Eva V. Stebler Foundation
Prescott T. Stevens Fund
Swalen 1983 Family Trust
Artemesia S. Vermillion Fund
Beulah I. Whitney Estate



Memorial Gifts

We are grateful for the Memorial Gifts given in honor of the lives of those no longer with us.

Your donations act as a touching tribute, uplifting families in honor of loved ones we have lost. Their legacy will live on through the many lives changed by your thoughtfulness.

We recognize the cherished loved ones lost last year and those family and friends contributing in their memory.

Alice & Emmanuel Bachmann

The Emanuel Bachmann
Foundation

Manuel A. & Gina Barrera

Jennie B. Barrera

Michelle D. Bell

Paula E. George
Joelle L. Landazabal

Frank Benso

Patricia E. McDonough

Kenneth Bisbing

Frank Akef

Dr. John L. Cahill

Patricia E. McDonough

Catherine Cameron

Bruce S. Cameron

Margaret Cimoli

Idolo Cimoli

John & Viola Dambrosio

Dr. Annette Dambrosio

Patricia Fantozzi

Harry McKee

James W. Harper

Marilyn R. Harper

Arlene & Fred Hipsher

Kelli M. Hinz
Diane K. Rogers

Anna Karen

Arizvel Chaudhari

Lawrence C. Kennedy

Dianne M. Easton
Kelli M. Hinz
Patricia E. McDonough
Douglas G. Schultz

Kenneth Kendrick

Dianne M. Easton
Kelli M. Hinz

Jana Dambrosio Kerwin

Dr. Annette Dambrosio

James Milgard

Patricia E. McDonough

Lynn Morgan

Wendy Hesse

Jean Mowbray

Dianne M. Easton

Chris Mratz

Dr. Annette Dambrosio

Arthur Paquette

Aaron Arthur Paquette
Carl D. & Genevieve F. Paquette

Carla Pemberto

Patricia E. McDonough

Roz Breuner Phair

Kelli M. Hinz
Joyce S. Frey

Patricia Rampton

Tracy A. Rampton

Christine Leonard Rembert

Jack E. & Karen Kay Leonard

Nancy Robison

Kelli M. Hinz

Margaret Schermerhorn

Pamela Magyar

David Sheean

Patricia E. McDonough

James Shirey

Patricia E. McDonough

Barbara Ann Studer

Peggy Garecht

Mr. & Mrs. Servando Tinoco

Dianne M. Easton
Patricia E. McDonough
Diane K. Rogers

Brian Wilson

Patricia E. McDonough

Ted Wright

Dianne M. Easton

Our Donors

Your gifts make a difference!

We are grateful to the members of our Gift Clubs, including our Corporate Partners, Heritage Club Members, Foundations and Trusts, Remembrance Gift contributors, United Way sponsors, and many other donors, as well as our generous Board of Directors and dedicated staff, who have joined with us to support California families. We recognize the generosity of the following gifts received from July 1, 2024, to June 30, 2025.

Gift Clubs

Gift Clubs provide special recognition to donors who, through a single annual gift or through monthly or quarterly donations, demonstrate their strong commitment to helping families succeed. Gift Club memberships are acknowledged at the following levels:

President's Circle of Distinction

Gifts of \$5,000 and above

President's Circle

Gifts of \$1,000 – \$4,999

Townsend Associates

Gifts of \$500 – \$999

CHS Sponsors

Gifts of \$125 – \$499

Friends of CHS

Gifts of up to \$124

In-Kind

President's Circle of Distinction

\$25,000 and above

John E. Sloan &

Joan C. Chargin Trust

Rose Marie Gnos Trust

Ralph and Nancy Gutmacher

Ida Nadine Magare Trust

Siegel Family Trust

G. N. Spencer Charitable Trust

Stella Laffer Spencer Fund

Swalen 1983 Family Trust

\$10,000 – \$24,999

Susan D. Bigley Trust

Attelia N. Hassinger Trust

Susan F. Laffer Charitable Trust

Elizabeth B.H. LeMenager

Living Trust

Fred Stebler &

Eva V. Stebler Foundation

\$5,000 – \$9,999

Herbert L. & Jacqueline A. Harger

Lucille S. Maben Estate

The Jocelyn Gibbons Marks &

Mary Scott Marks Charitable Trust

John P. & Diane K. Rogers

Artemesia S. Vermillion Fund



President's Circle

\$1,000 – \$4,999

Frank Akef
Cynthia Alcott
Donald P. Amiotte
Van G. Chau
Arizvel Chaudhari
Rachel Dailey
Engel Family Foundation
Joyce S. Frey
Deborah Garcia
John M. Gilbert Memorial Fund
Hope Gonzales
Kelli M. Hinz
Virginia M. Jameson Trust

Diane Jasso
Dr. Benjamin Keh & Dr. Patricia Gee
Nicole Lange
Harold Arthur Lietzau Trust
Deborah Ruth Liu, M.D.
Patricia E. McDonough
Bonnie L. McFarland
Erma & Farley O'Brien Memorial
Fund of The San Diego
Foundation
Orangeland Recreation Vehicle
Park, Inc.
Jennifer Ostergaard

Pledgeling Foundation
Terry Polcaro
Renaissance Charitable Foundation
Roy B. Richardson Estate
Gladys Romero
Douglas G. & Pamela Schultz
Signal Hill Petroleum, Inc.
Susan
Denise Terry
May & Salila Thiveganon
Jeffrey & Beverly Tidwell
Beaulah I. Whitney Estate
Julie Zuer

Townsend Associates

\$500 – \$999

Ardent Mills LLC
The Emanuel Bachmann
Foundation
Diana Baltazar
Thomas M. Blalock
Angela Carroll
Linda Dao
Dwight W. & Glee Ann Davis
Sal Diaz
Dianne M. Easton
Sandra Herrera-Gonzalez
Talia Jacobson

Joseph & Joelle L. Landazabal
Harry McKee
Karla Moreno
Joseph Ostrow
Anne E. Piasecki
Elio & Joy Rodoni
John H. & Alice J. Schroeder
Charles H. & Judith K. Spencer
Edward R. & Ana Stephens
John A. & Mary Ann Sturgeon
The Wanderers Motorcycle Club



CHS Sponsors

\$125 – \$499

Jennie B. Barrera
Robert W. & Maureen A. Buck
Thomas Buzzard
Jen Feng Chang
Edo & Margo Cimoli
Dr. Annette Dambrosio
Emerson Electric Company
Jake & Freya Fuchs
Paula E. George
Larry & Rosa Henderson

Wendy Hesse
Kenneth Kendrick
Laura N. La Shelle
Todd & Lori McCormack
David Mendoza
Warren & Holly Otto
Aaron Arthur Paquette
Carl & Genevieve Paquette
PayPal Giving Fund
Evelyn W. Pickering

Tracy A. Rampton
Roberts Family Charitable Fund
Michael S. & Patricia Ruffolo
George & Georgia Sakai
Susan K. Springborg &
Greg A. Martin
Gehan Tadros
Mr. & Mrs. Robert W. Templeton

Friends of CHS

Up to \$124

Robert Morle Amos
Aik Barsegian
Gulshan Bhataknauer
The Blackburn Giving Fund
George C. & Cora Ann Blytas
Bob & Martha
Linda Brown
Mr. & Mrs. Howell L. Broxton
Bruce S. Cameron
Karen L. Chew
Mimi M. Chung
Carol A. Clarke
The Clorox Company
Monica D. Clyde
Cooper Industries PLC
Christine Cornnell
Ann Corwin
Mr. & Mrs. Anthony J. Costa
Costco - Frontstream
Patsy Coulson
Thomas & Judy Cronin
Roger E. & Kendra L. Culbertson
Stanley Fong
Lenore K. Frost
Peggy Garecht

Lee Gilpin Trust
Give Lively Foundation, Inc.
Michael W. Goode
Bob & Janet Hansen
Marilyn R. Harper
Beverly L. Higginson
Virgil A. & Jonnie Hoffman
David S. & Bonnie Hower
T. L. & J. W. Hunter
Randall Ishino
John & Kathleen Karmendy
Andrew L. & Nancy B. Katz
Carmen A. Keenan
Bebe Lam
Susan J. Lambertson
Jack E. & Karen Kay Leonard
Janice Littlejohn
Russ A. Loar
Dr. & Mrs. Douglas Martin
Pamela Maygar
Kimberly Meza
David S. & Suzanne Murray
Sandy Nguyen
Beverly Nodes
Judy D. Olson

Maureen Olson
Patricia Parsons
Carroll M. Pearson
Edward C. Remedios
Tanya R. Sanchez
Kenneth A. & Annie M. Saso
Rebecca Schenone
Wayne & Beverly Shomaker
Allan & Melinda Siegel
Janet Loretz Stamm
Roger D. & Vicki Stern
Prescott T. Stevens Fund
Sara Storm
Esther Szabo
Annick Thijs
Mary Lou Vidergar
Marian Waddell
Gerald W. & Lillian Wagner
Ken & Bette Waterstreet
Joseph Webber
Arnold & Gail Widofsky
Glyn D. & Trevlyn A. Williams
John H. & Sharon L. Wilson
Bob & Elizabeth Yapp
Justin Yeh

In-Kind

Andrea Gapasin
LBS Financial Credit Union
Toys for Tots - San Diego
St. John's Episcopal School -
Student Council



Heritage Club

Our Heritage Club includes those committed to creating a lasting impression, ensuring CHS's strong future so that families have support in continuum.

By giving through charitable vehicles such as wills, a variety of charitable trusts, and annuities, these valuable gifts continue to improve the lives of those in need.

Barbara Y. Beebe

La Jolla

Thomas M. Blalock

Fremont

Andrea & John Bonn

Swampscott, MA

**Mollyanne Brewer & Alexa
Maremaa**

Richmond

Harry & Sue Bubnack

Lake San Marcos

Jack & Harriette Carr

Carmichael

Dianne M. Easton

San Rafael

Michelle Flynn

Alpine

Adrienne & Dale Forester

Santa Ana

Mrs. Victor D. Freudenberger

San Luis Obispo

Anita & Richard Gandolfo

Livermore

Michael W. Goode

Santa Cruz

Carole J. Gower

Yuba City

Kathy & Harold Griswold

Monarch Beach

Herbert L. & Jacqueline A. Harger

Manhattan Beach

Richard H. Hawley

Cambria

Ron & Shelly Juskiewicz

Orange

Eugene L. Lee

Monterey

**Elizabeth B. H. LeMenager
Living Trust**

Prescott, AZ

John & Renee C. McAmis

Chico

Doris H. McKee

San Rafael

Maryanne McMahon

Redmond, OR

Donal & Betty Meyer

Sutter

Elma B. Mock Trust

San Diego

Lynne & Doug Newcomb

Santa Ana

**William J. & Willadel A. Niccoli
Living Trust**

Myrtle Creek, OR

Madison & Florence Payne

Cherry Valley

Bob Riggs

Newport, OR

John P. & Diane K. Rogers

San Mateo

Gerry Sauer

Newhall

Lola I. Scavo

Fullerton

**August L. & Mary V. Segelhorst
Estate**

Corona Del Mar

Jeanne P. Siegel

Tustin

Shirley & Norman Soderquist

Fullerton

Peter M. & Susanne E. Spandau

Arvada, CO

Foster D. Sparkman

Saugus

Mr. & Mrs. James T. Spradley, Jr.

Greenwood Village, CO

Jerome D. & Mary K. Swalen

Los Gatos

Barrie Wentzell

Rancho Santa Fe

David & Nancy White

Rancho Santa Fe

Honor Gifts

CHS Honor Gifts are a wonderful way to celebrate important milestones in the life of a family member, friend, or colleague.

Whether a gift is made to honor a life, or to celebrate an anniversary, wedding, graduation, birthday, or any other special occasion, your gift provides a legacy of caring for children and families for years to come.

Anne E. Blalock

Thomas M. Blalock

Charles Broxton

Howell L. & Bonnie J. Broxton

Chris Haymore

Susan

Christopher & Ashley La Shelle

Laura N. LaShelle

Meza Family

Kimberly Meza

Diane K. Rogers

Gulshan Bhatiaknauer

Karen L. Chew

Mimi M. Chung

Patsy Coulson

Kathleen Karmendy

Nancy B. Katz

Carmen A. Keenan

Suzanne Murray

Judy D. Olson

Maureen Olson

Rebecca Gaynor Schenone

Janet Stamm

Vicki Stern

Marian Waddell

Trevlyn A. Williams

Elizabeth Yapp

Rodney Storm

Sara Storm

Andrea Waterstreet - Happy Birthday

James K. & Bette Waterstreet



Give a Gift for Good

You can make a difference for children and families today and for generations to come:

Online: Make a secure donation at www.chs-ca.org.

By Mail: Use the enclosed envelope to send your gift.

Tribute Gifts: Give in memory or in honor of a loved one, or send a holiday greeting with your donation.

Planned Giving: Create a lasting legacy through a specific bequest to CHS in your trust or will. Planned Giving offers many ways to maximize your gift, and it gives you the opportunity to join the CHS Heritage Club. Our program provides resources on estate planning and can help you design a legacy gift that fits your personal circumstances. Talk to your financial advisor to learn more.

For every dollar given, **93 cents**
goes directly to programs and services



**Scan to
donate
now!**

We are truly grateful for your generosity and support. Your commitment helps ensure families have the programs and resources they need not only to thrive today, but to build strong foundations for the future.

For questions or more information on how to donate, please visit our website at www.chs-ca.org, or contact the CHS Development Department at **(213) 240-5925**.



Staff Recognition

For 134 years, CHS has been a trusted resource, providing families with the programs and services to achieve their goals. Thanks to the dedication of our caring staff, we continue to deliver high-quality programs that meet families' needs. We are proud to recognize the following staff for their longstanding commitment to California families.

30 – 34 Years

Beverly Tidwell
Los Angeles

Lupe Ramirez
Oxnard

25 – 29 Years

Cynthia Alcott
Los Angeles

Maria G. Bogarin
Long Beach

Yolanda Martinez Cabral
Orange

Rosario M. Cayetano
Long Beach

Linda Dao
Long Beach

Sal Diaz
Orange

Irma Dominguez
Orange

Martha Gonzalez
Long Beach

Joylyn Hans
Yuba City

Kelli M. Hinz
Los Angeles

Diane Jasso
Orange

Joelle L. Landazabal
Long Beach

Marisol Suazo
Orange

20 – 24 Years

Linda Loza Adams
Oxnard

Diep N. Dobmeier
Orange

Marissa M. Gabriel
Long Beach

Deborah Garcia
Los Angeles

Jenny Gonzalez
Long Beach

Latrice M. Harton
Long Beach

Patricia Hernandez
Los Angeles

Maria De Jesus Jimenez
Long Beach

Amy Le
Long Beach

Anna Mendez
Orange

Araceli Mendoza
Long Beach

Merceditas T. Ocampo
Long Beach

**Milagros A. Pasquin
(retired)**
Oxnard

Amy Truong
Orange

**Maricris Vizcarra
Sahagun**
Long Beach

Sherri Stoudt
Yuba City

Pamella K. Yates
Orange

15 – 19 Years

Anisa Bunnag
Long Beach

Van Chau
Los Angeles

Elizabeth Enriquez
Long Beach

Larry Henderson
Long Beach

Sandra Herrera-Gonzalez
Long Beach

Liliana Montes
Long Beach

Jenelle T. Nelson
Long Beach

Beth M. Odom
Long Beach

Bridget Rattler
Los Angeles

Carmen R. Reels
Long Beach

Gladys Romero
Long Beach

Edna Soraya Sanchez
Long Beach

Gabriela Sandoval
Long Beach

Elvira Silva
Orange

Ana Stephens
Long Beach

May Thiveganon
Orange

Sandra Velarde
Orange

10 – 14 Years

Yvonne Diaz
Orange

Hope Gonzales
Oxnard

Lucia Leon
Long Beach

Kristen M. Nixon
Yuba City

Jennifer Ostergaard
Orange

Terry Polcaro
Los Angeles

Jessica Ramos
Long Beach

Maria G. Reynoso
Orange

Amenda Srey
Long Beach

Julie Zuer
Orange



CORPORATE HEADQUARTERS

1300 West Fourth Street
Los Angeles, CA 90017
(213) 240-5900
FAX (213) 240-5945

LONG BEACH

4900 Airport Plaza Drive, Suite 100
Long Beach, CA 90815
(562) 256-7400

ORANGE

333 South Anita Drive, Suite 350
Orange, CA 92868
(714) 456-9800

OXNARD

1801 Solar Drive, Suite 195
Oxnard, CA 93030
(805) 437-1910

SAN DIEGO

2650 Camino del Rio North, Suite 104
San Diego, CA 92108
(619) 293-3411

WOODLAND

1100 Main Street, Suite 120
Woodland, CA 95695
(530) 723-5225

YUBA CITY

1650 Sierra Avenue, Suite 102
Yuba City, CA 95993
(530) 673-7503



**CHILDREN'S
HOME
SOCIETY OF
CALIFORNIA**
www.chs-ca.org



© 2025
Children's Home Society of California

CHS is a non-profit 501(c)(3) organization, and
contributions are tax deductible under federal
and state law.